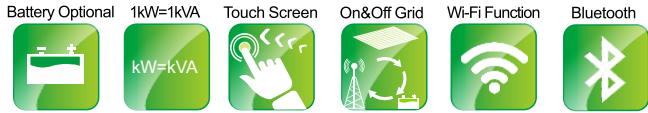


# REVO -II Series

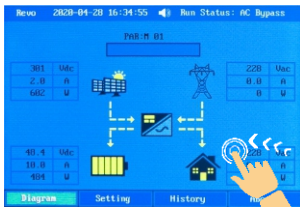
## Hybrid Energy Storage Inverter

3-5.5KVA



### Product Snapshot

Model: 3-5.5kW  
 Nominal Voltage: 220/230/240VAC  
 Frequency Range: 50Hz/60Hz



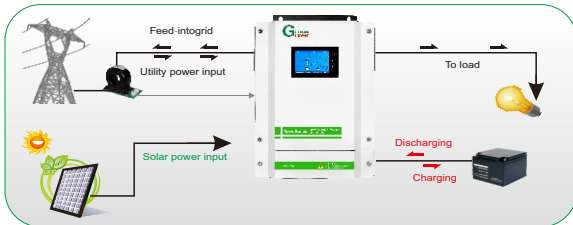
Touch Display Screen



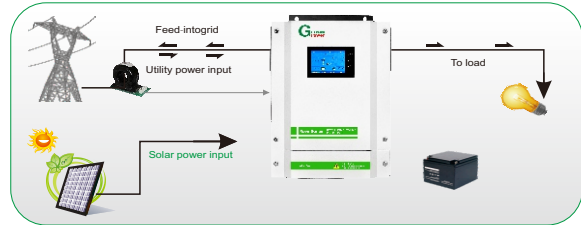
Dust Proof

### Hybrid Operation

With battery connected

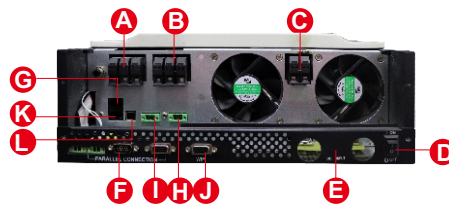


Without battery connected

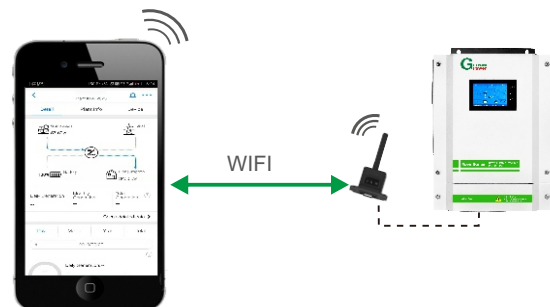


### Key Features:

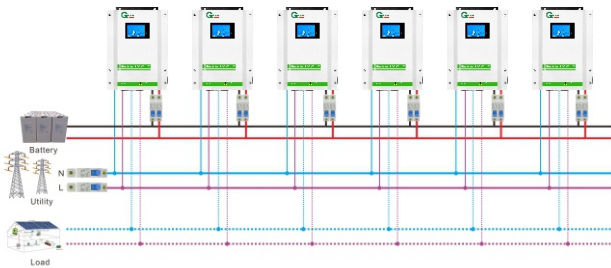
- Touch screen display.
- PV and utility power the load at the same time ( can be set ).
- Output power factor PF=1.0 .
- On&Off Grid with energy storage.
- Energy generated record, load record, history information and fault record.
- Structure with dust filter.
- AC charging start and stop time setting.
- External Wi-Fi device optional.
- Parallel operation up to 9 units .
- Connected with battery optional.
- Wide PV input range 120-450VDC.
- Independent CPU.
- MAX PV Array power 5500W.
- Solar and Utility supply power to the load When solar power is not sufficient to load.
- The CT sensor will monitor the power consumption of the system and will make sure no excess PV power is delivered to the Grid.



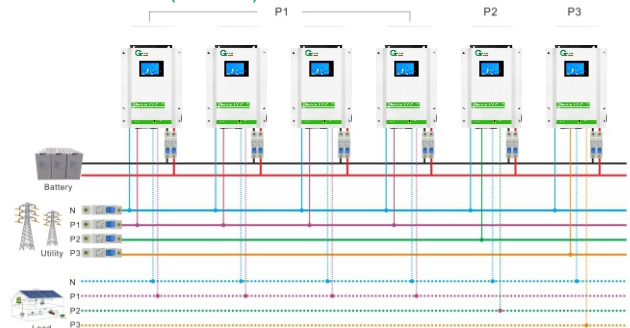
- A AC input
- B AC output
- C PV input
- D ON/OFF switch
- E DC input
- F Parallel connection terminal
- G CAN
- H Generator dry contactor
- I CT
- J Wifi
- K RS232
- L USB



■ Single phase output up to 49.5KW using 9 units



■ Three phase output using either 3 units(16.5KW)or max 9 units(49.5KW)



## REVO-II Series

### Wall Mounted Integrated Solar Power Inverter Technical Specification Built-in MPPT Solar Controller

MODEL	REVO II 3k-24	REVO II 3.2k-48	REVO II 5.5k-48
Max PV Array Power		5500W	
Rated Output Power	3000W	3200W	5500W
MPPT Range @ Operating Voltage	120-450VDC		
<b>GRID-TIE OPERATION</b>			
GRID OUTPUT (AC)			
Nominal Output Voltage	220/230/240VAC		
Output Voltage Range	184-265VAC		
Nominal Output Current	13.6A/13.0A/12.5A	14.5A/13.9A/13.3A	20.5A/19.6A/18.8A
Efficiency	up to 93%		
<b>OFF-GRID, HYBRID OPERATION</b>			
GRID INPUT			
Acceptable Input Voltage Range	120-280VAC or 170-280 VAC		
Frequency Range	50Hz/60Hz (Auto sensing)		
BATTERY MODE OUTPUT (AC)			
Nominal Output Voltage	220/230/240VAC		
Output Wave Form	Pure sine wave		
BATTERY & CHARGER			
Nominal DC Voltage	24VDC	48VDC	
Maximum AC Charge Current	60A		
Maximum Charge Current(AC+PV)	90A		
<b>Emergency output power</b>			
Maximum output Power	3000W	3200W	5500W
Surge Power	6000W	6400W	11000W
Automatic Transfer Time	<10ms		
<b>GENERAL</b>			
INTERFACE			
Parallel Function	Yes		
Communication	USB or RS232,WIFI, Generator dry-Contact		
ENVIRONMENT			
Humidity	0~90% RH (No Condensing)		
Operating Temperature	0 to 50 °C		
Net Weight(KG)	11.75	11.9	
Gross Weight(KG)	12.75	13.1	
Dimension (W x D x H)mm	345x476x133.2		

Note:Product specifications are subject to change without further notice.  
SSI20-000010-28